

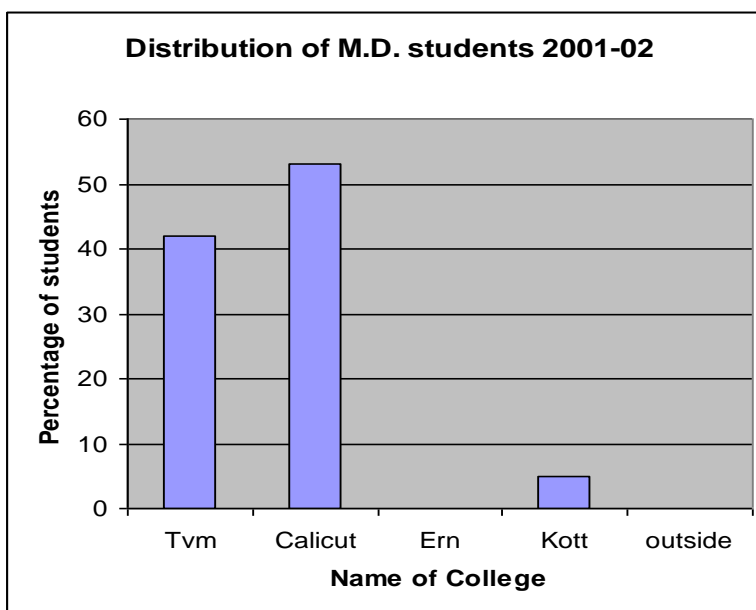
Statistical Analysis of Admission To M.D. (Hom) Course At Govt. Homoeopathic Medical Colleges In Kerala

Dr Ajith kumar D S,
Tutor, Dept. of Physiology & Biochemistry,
Govt. Homoeopathic Medical College, Calicut.
Email : ajithdevarajan@yahoo.co.in

Statistical Data Showing Representation of Students From Different Homoeopathic Colleges For M.D (Hom) Course In Various Years

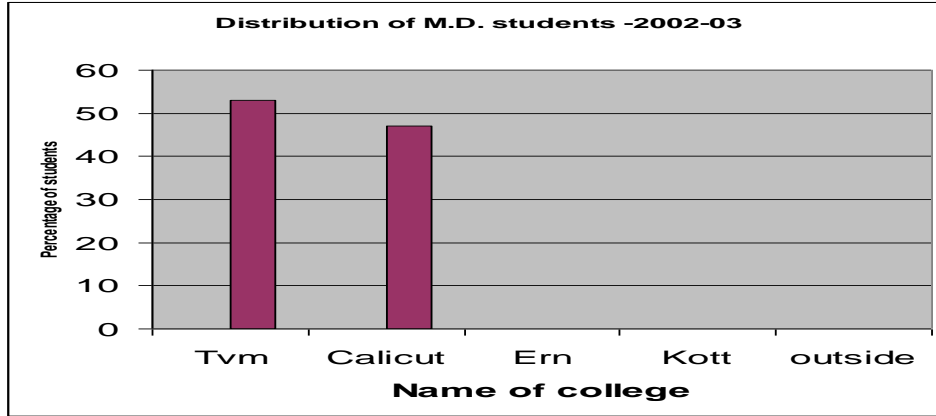
DISTRIBUTION OF M.D (Hom) students during 2001 -02

Colleges	No: of students	Percentage
Trivandrum	8	42
Calicut	10	53
Ernakulam	0	0
Kottayam	1	5
Outside kerala	0	0
Total	19	



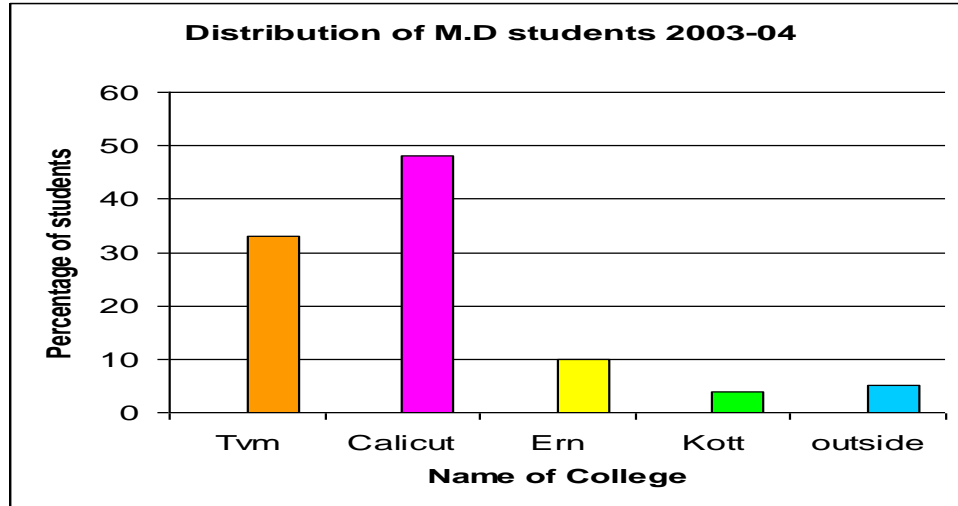
DISTRIBUTION OF M.D (Hom) students during 2002 -03

Colleges	No: of students	Percentage
Trivandrum	18	53
Calicut	16	47
Ernakulam	0	0
Kottayam	0	0
Outside kerala	0	0
Total	34	



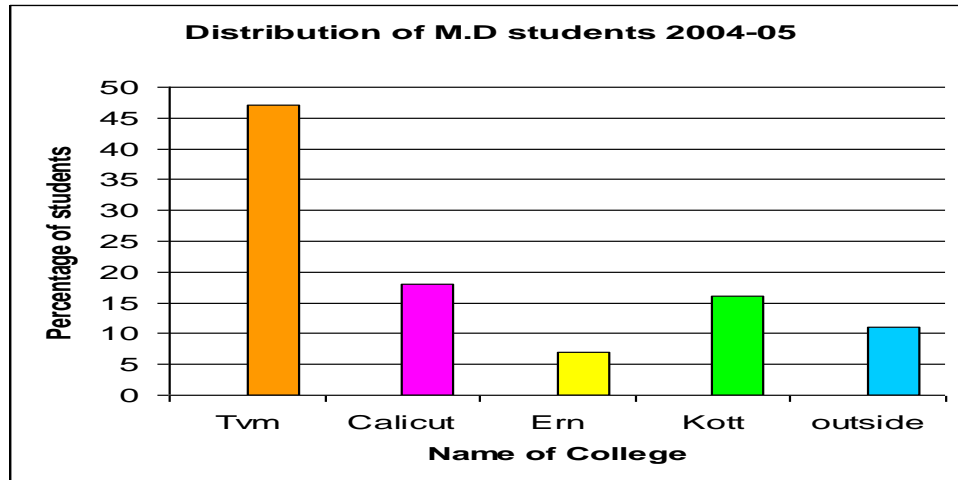
DISTRIBUTION OF M.D (Hom) students during 2003 -04

Colleges	No: of students	Percentage
Trivandrum	17	33
Calicut	25	48
Ernakulam	5	10
Kottayam	2	4
Outside kerala	3	5
Total	52	



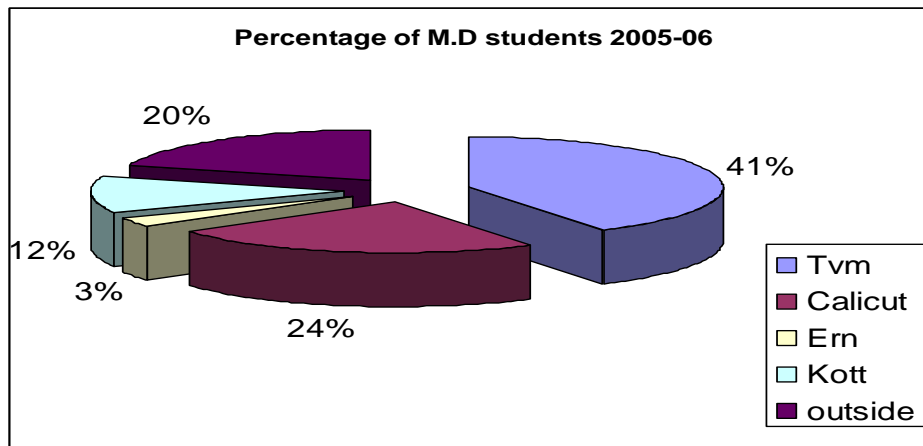
DISTRIBUTION OF M.D (Hom) students during 2004 -05

Colleges	No: of students	Percentage
Trivandrum	26	47
Calicut	10	18
Ernakulam	04	7
Kottayam	09	16
Outside kerala	6	11
Total	55	



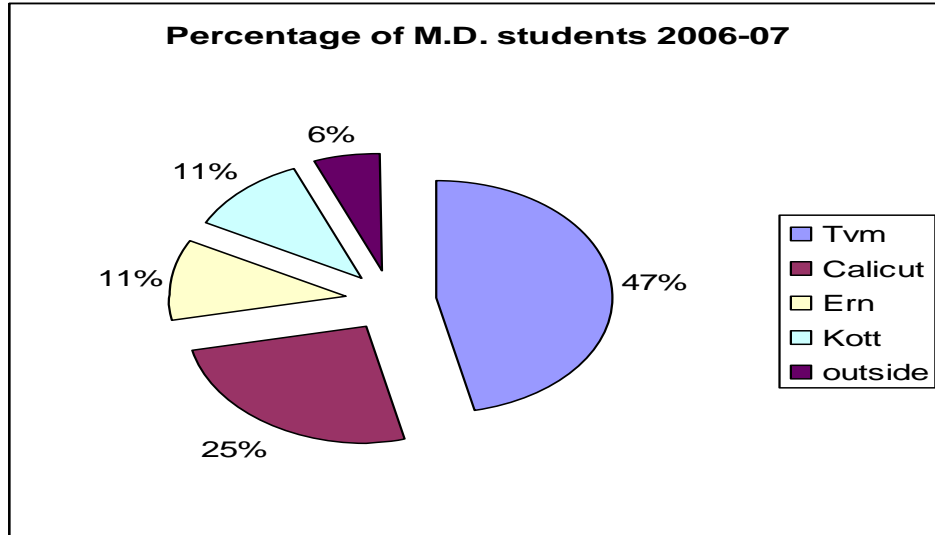
DISTRIBUTION OF M.D (Hom) students during 2005 -06

Colleges	No: of students	Percentage
Trivandrum	14	41
Calicut	8	24
Ernakulam	1	3
Kottayam	4	12
Outside kerala	7	20
Total	34	



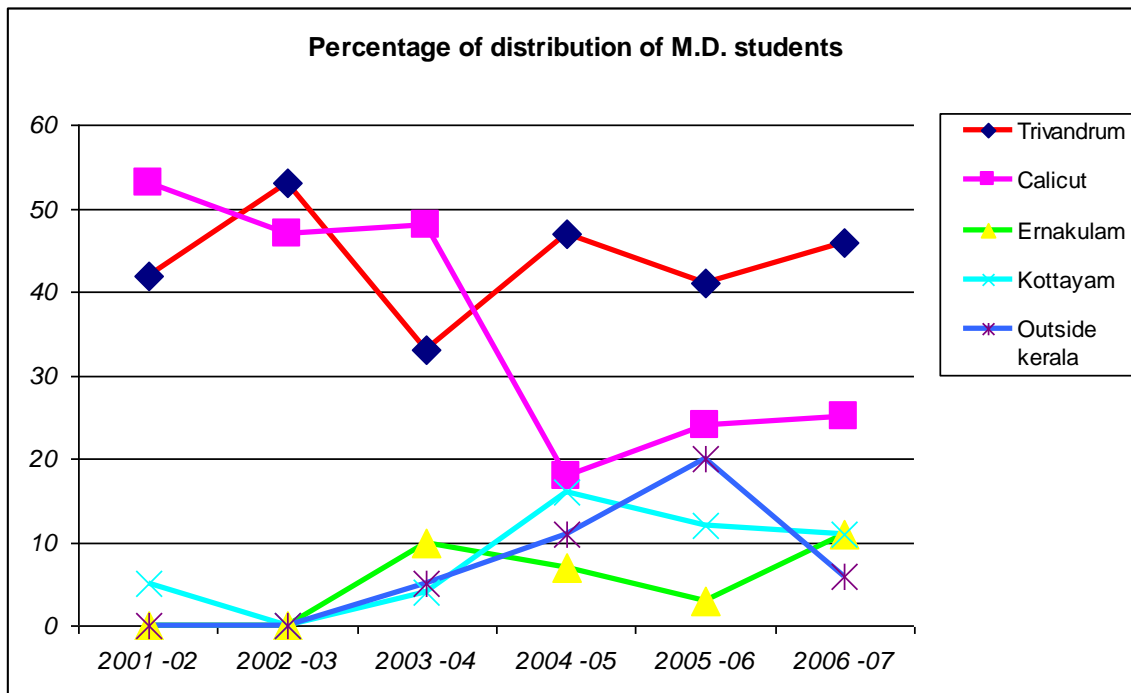
DISTRIBUTION OF M.D (Hom) students during 2006 -07

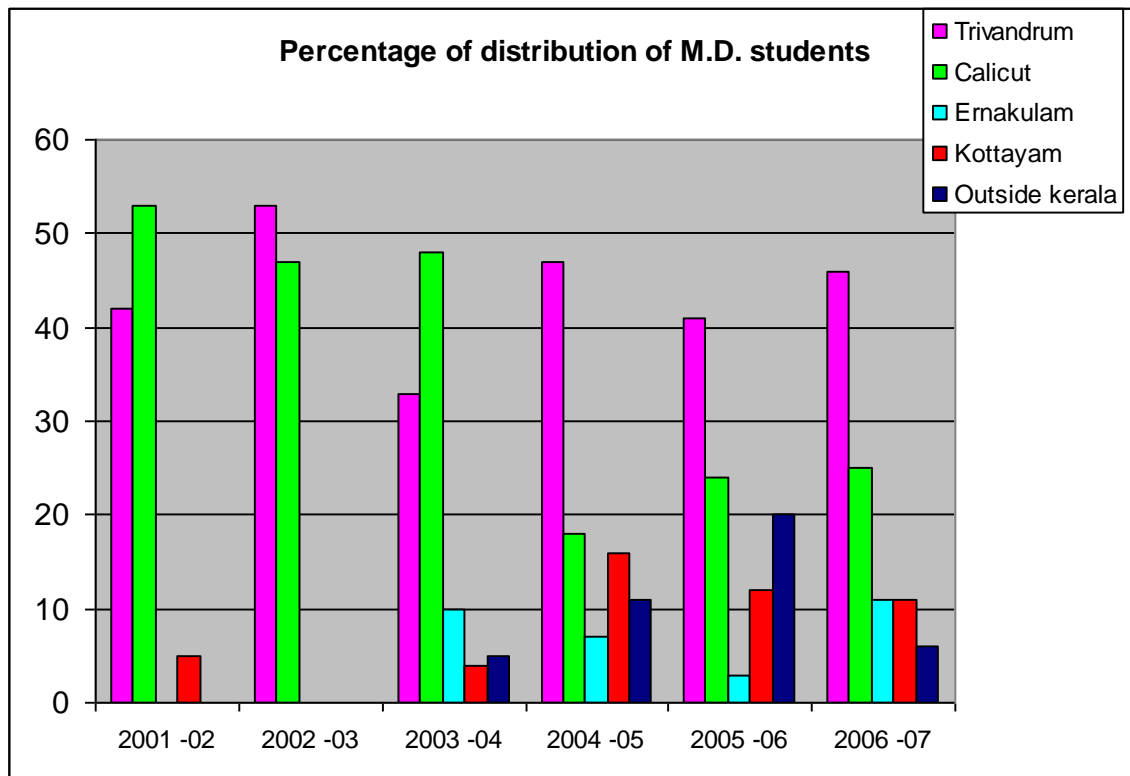
Colleges	No: of students	Percentage
Trivandrum	16	46
Calicut	9	25
Ernakulam	4	11
Kottayam	4	11
Outside kerala	2	6
Total	35	



Percentage of Distribution of M.D students during the last six years

Colleges	2001 -02	2002 -03	2003 -04	2004 -05	2005 -06	2006 -07
Trivandrum	42	53	33	47	41	46
Calicut	53	47	48	18	24	25
Ernakulam	0	0	10	7	3	11
Kottayam	5	0	4	16	12	11
Outside kerala	0	0	5	11	20	6





All rights reserved @ similima